

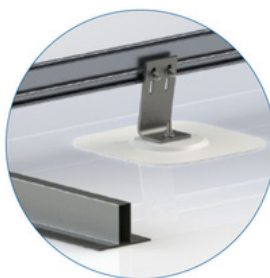
## TGR-DT - Flat Roof Mounting Solution

If you want to increase the module density and kWp on your rooftop space without sacrificing module support or potentially voiding your module warranty, then TGR Dual Tilt is the ideal solution for you

### Uplift Resistance Options



Ballast



Mechanical  
Attachment



Custom

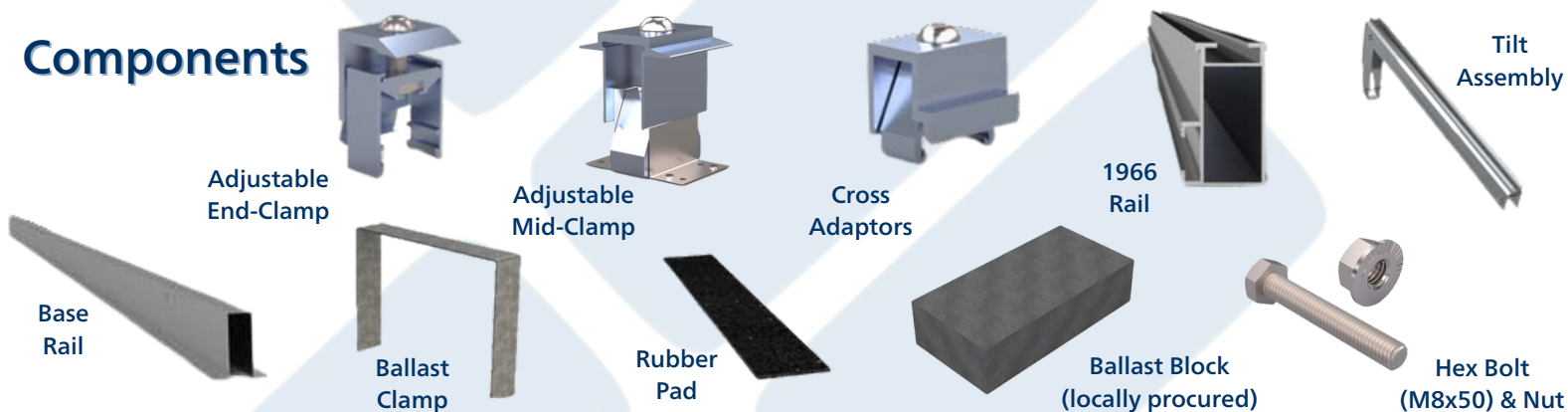
### Certifications



# Features and Benefits

- **Rail Based**
  - Low ballast requirements, as low as 2.3psf
  - Clean and accessible wire management
  - Doesn't rely on the module for load sharing increasing microcracks
- **Clamp in Module Green Zones**
  - Maintain module warranty
  - Allows for highest load rating for snow load or high wind regions
- **Flexible Design**
  - Any tilt angle or row spacing to the customer's specifications to maximize power generation.
  - Higher tilt options unique to the market
  - Any row spacing to maximize panel density
- **No Wind Screen Required**
  - Installation efficiencies
  - Cooling effects on modules lead to increased performance
  - Reduce snow build up on following module
- **Service From Start to Finish**
  - Project management and support
  - Project specific engineering packages
  - Construction package walkthroughs
  - Experienced and knowledgeable support team

## Components



## Technical Specs

<b>Tilt Angle:</b>	0° - 35°	<b>Building Height:</b>	Any
<b>Panel Orientation:</b>	Portrait or landscape	<b>Wind Speed:</b>	Any
<b>Row Spacing:</b>	Customizable	<b>Wind Tunnel Testing:</b>	RWDI
<b>Roof Type:</b>	All roof types	<b>Certifications:</b>	UL 2703, LTR AE-001-2012
<b>Roof Attachment</b>	Ballast, Anchor or Hybrid	<b>Warranty:</b>	Standard 10 with 15-20 available upon request
<b>Material:</b>	Aluminum, stainless steel & galvanized steel		