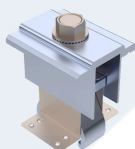


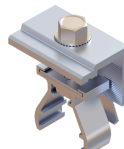
Features & Benefits:

- Single layer of rail suitable with any attachment
- High rigidity of rails for larger loads
- Reduce attachment points
- Stagger attachments to utilize every truss
- Utilize truss strength instead of roof deck
- Easy wire management
- Clamp modules in approved zones
- Universal click-on components

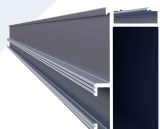
Components:



Mid clamp



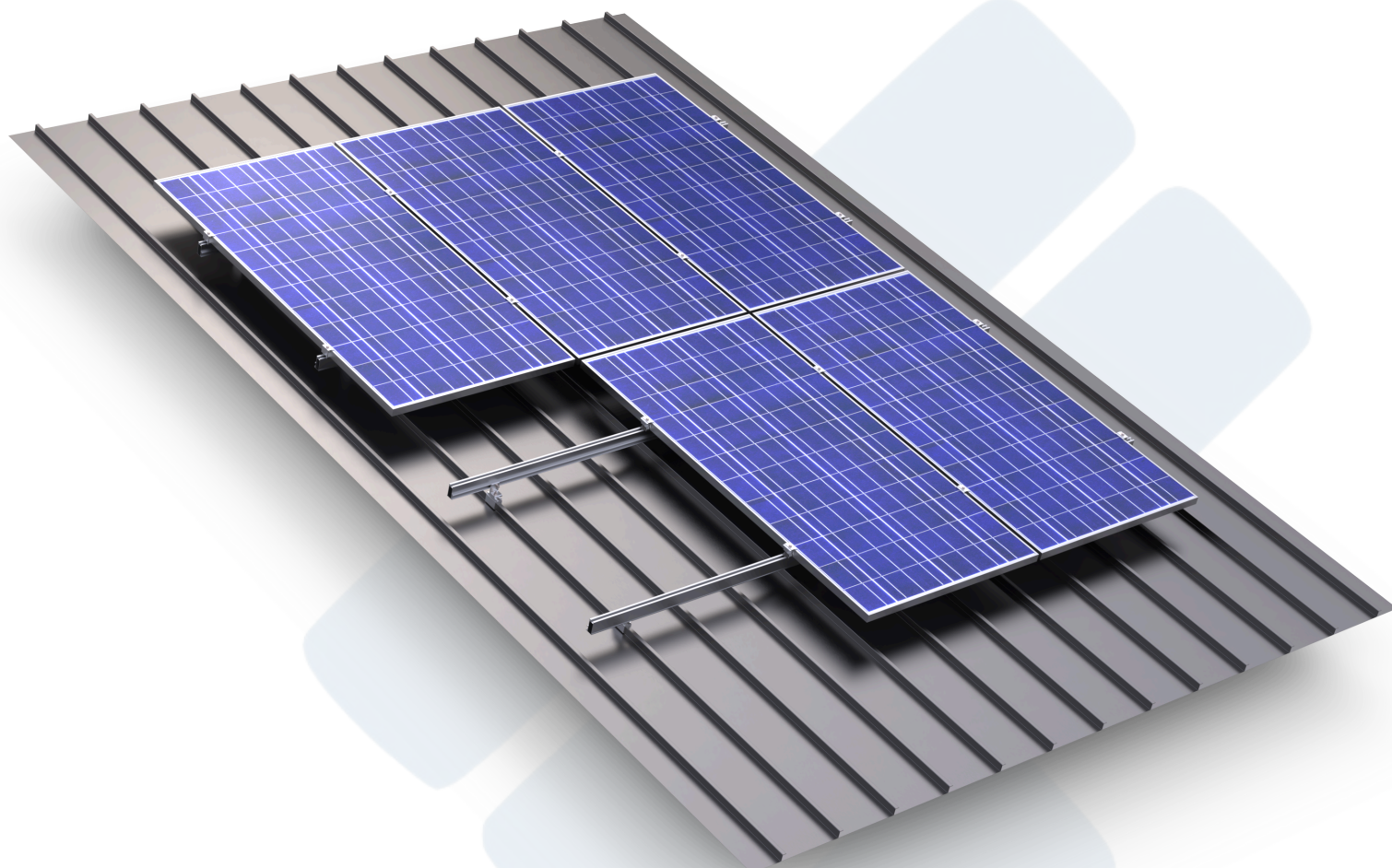
End clamp



Top rail



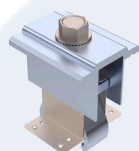
Angle bracket



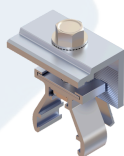
Features & Benefits:

- No roof penetrations
- High rigidity of rails for larger loads
- Single layer of rail suitable with any standing seam clamp
- Stagger attachments to utilize every seam
- Easy wire management
- Clamp modules in approved zones
- Universal click-on components

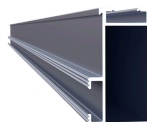
Components:



Mid clamp



End clamp



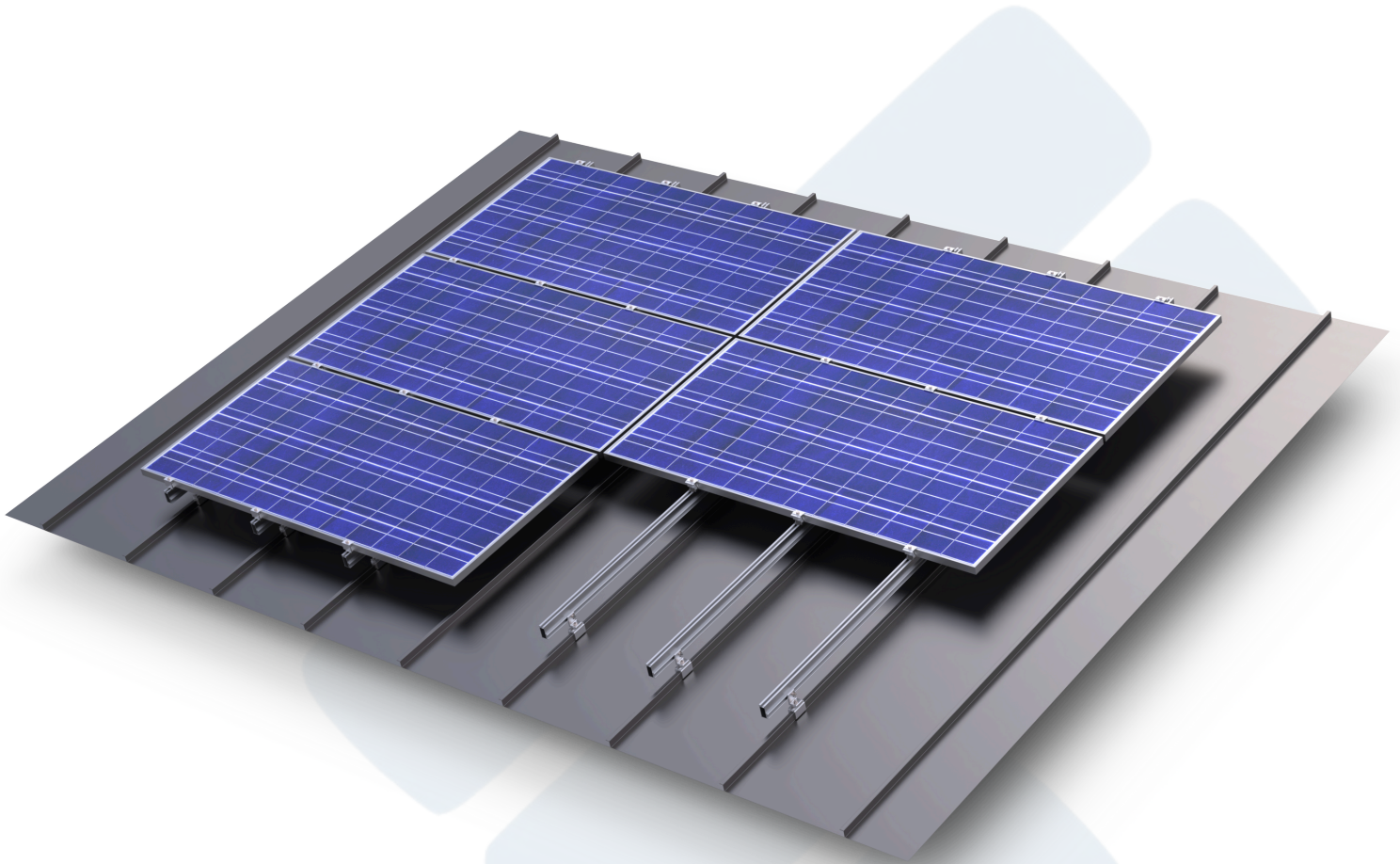
Top rail



Angle bracket



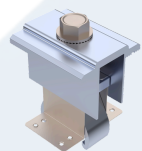
Standing seam



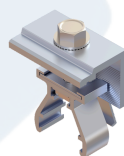
Features & Benefits:

- Single layer of rail suitable with any standing seam clamp
- No roof penetrations
- High rigidity of rails for larger loads
- Optimize your roof if it's better suited for landscape orientation
- Easy wire management
- Universal click-on components

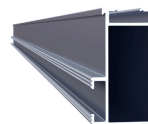
Components:



Mid clamp



End clamp



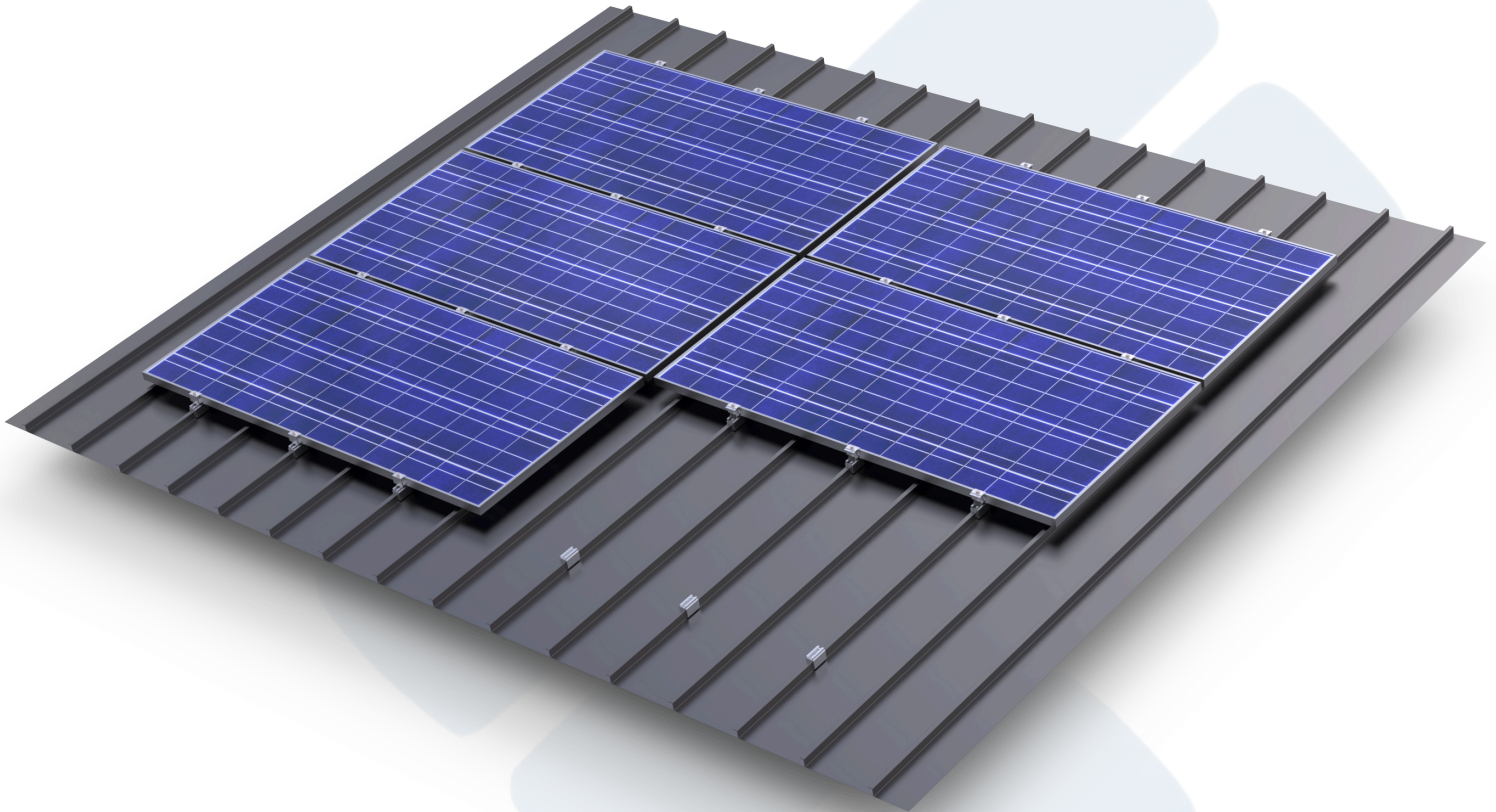
Top rail



Angle bracket



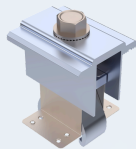
Standing seam



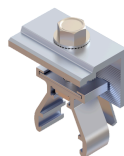
Features & Benefits:

- Economical option with minimal components
- Universal standing seam clamp works with most roof types
- No roof penetrations
- Reduce attachment points
- Optimize your roof if it's better suited for landscape orientation
- Universal click-on components

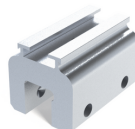
Components:



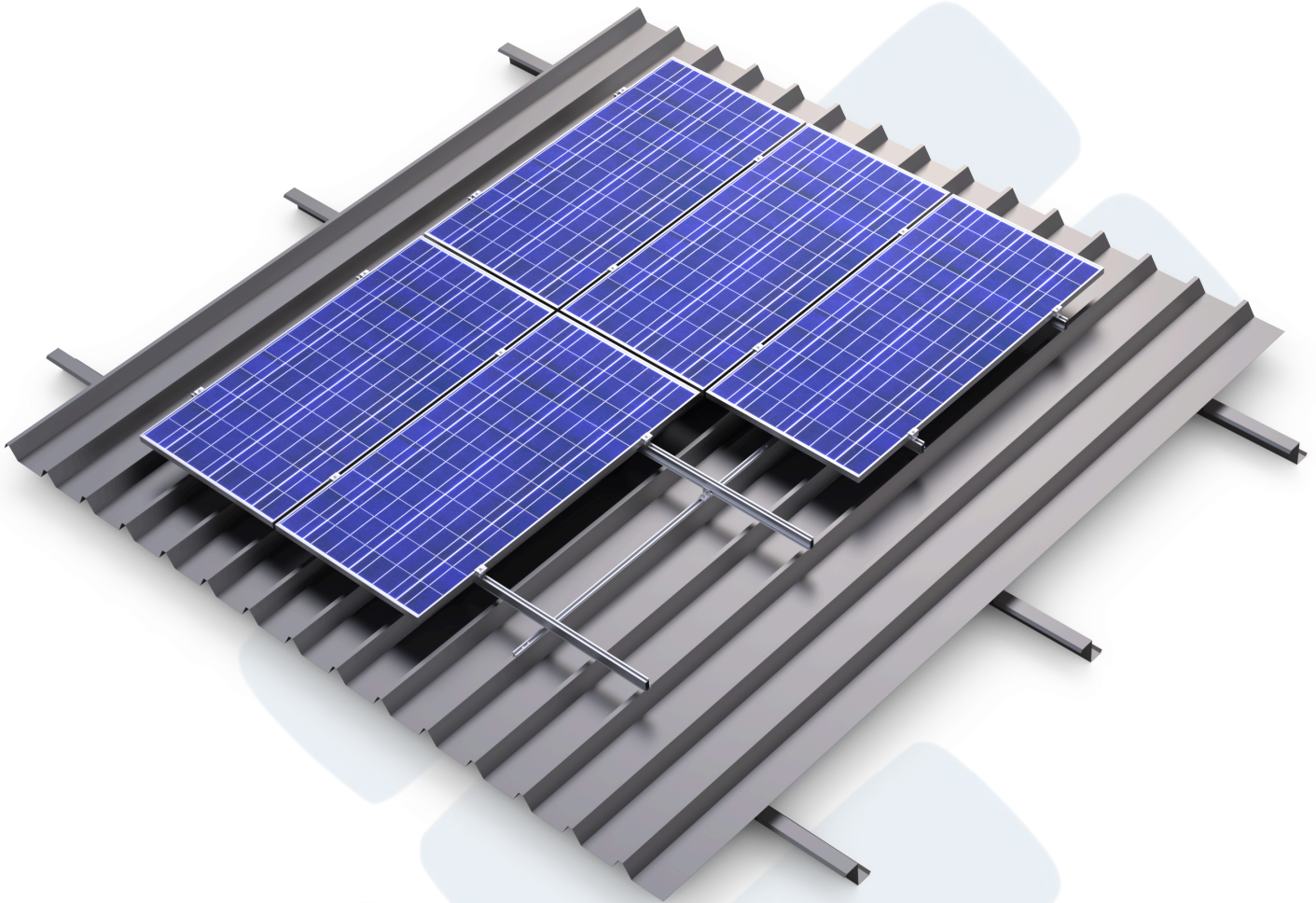
Mid clamp



End clamp



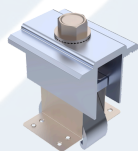
Standing seam



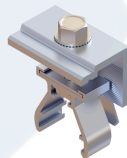
Features & Benefits:

- Compatible with any metal roof attachment
- High rigidity of rails for larger loads
- Fasten through the high ridge eliminating leak concerns
- Easy wire management
- Clamp modules in approved zones
- Universal click-on components
- Reduce attachment points by fastening to the purlins

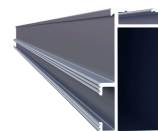
Components:



Mid clamp



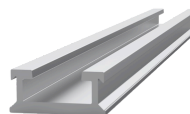
End clamp



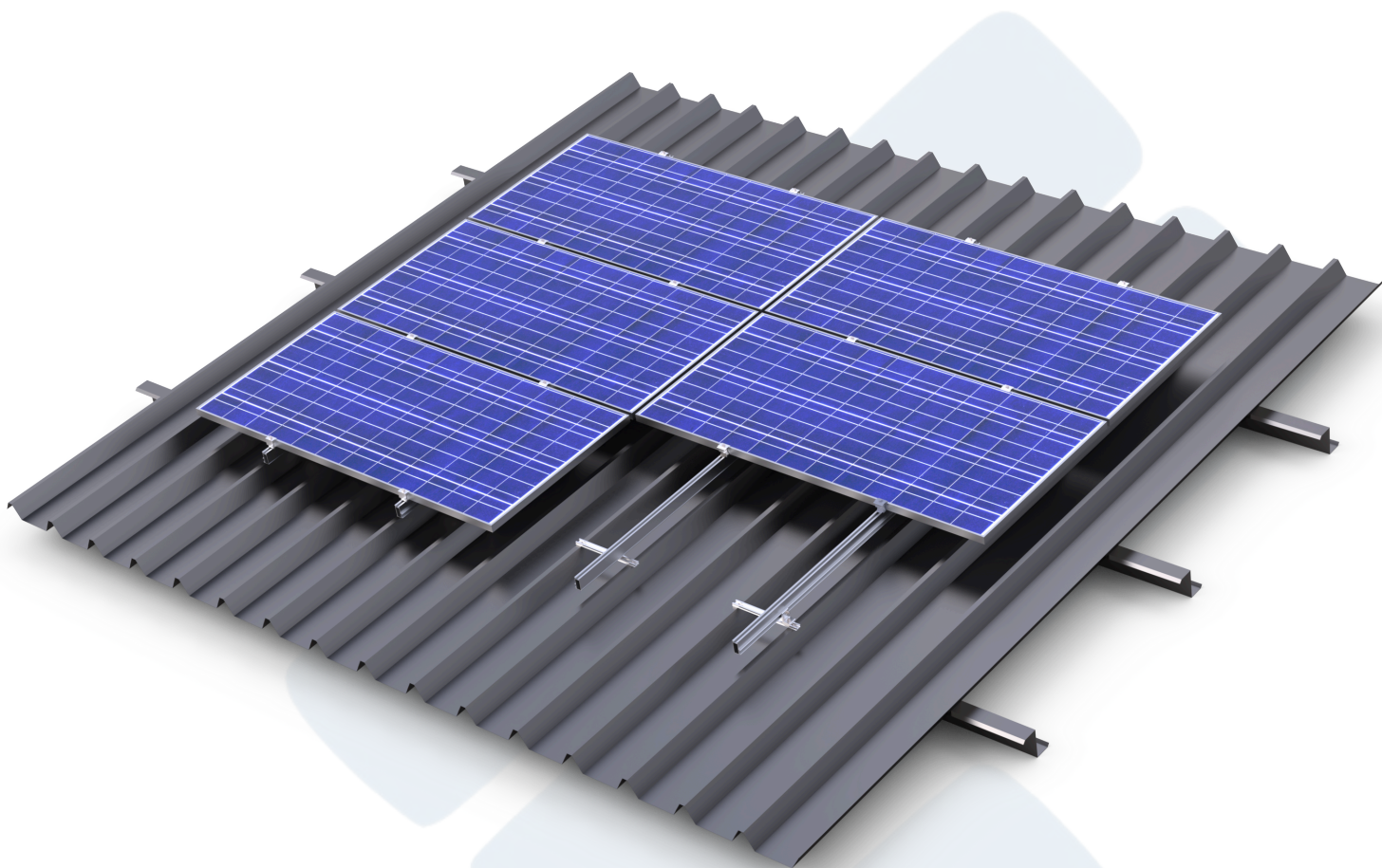
Top rail



Angle bracket



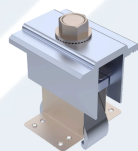
Connection rail



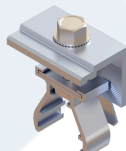
Features & Benefits:

- Compatible with any metal roof attachment
- High rigidity of rails for larger loads
- Fasten through the high ridge eliminating leak concerns
- Easy wire management
- Clamp modules in approved zones
- Universal click-on components
- Reduce attachment points by fastening to the purlins

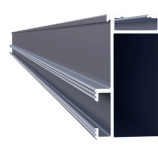
Components:



Mid clamp



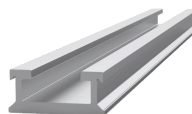
End clamp



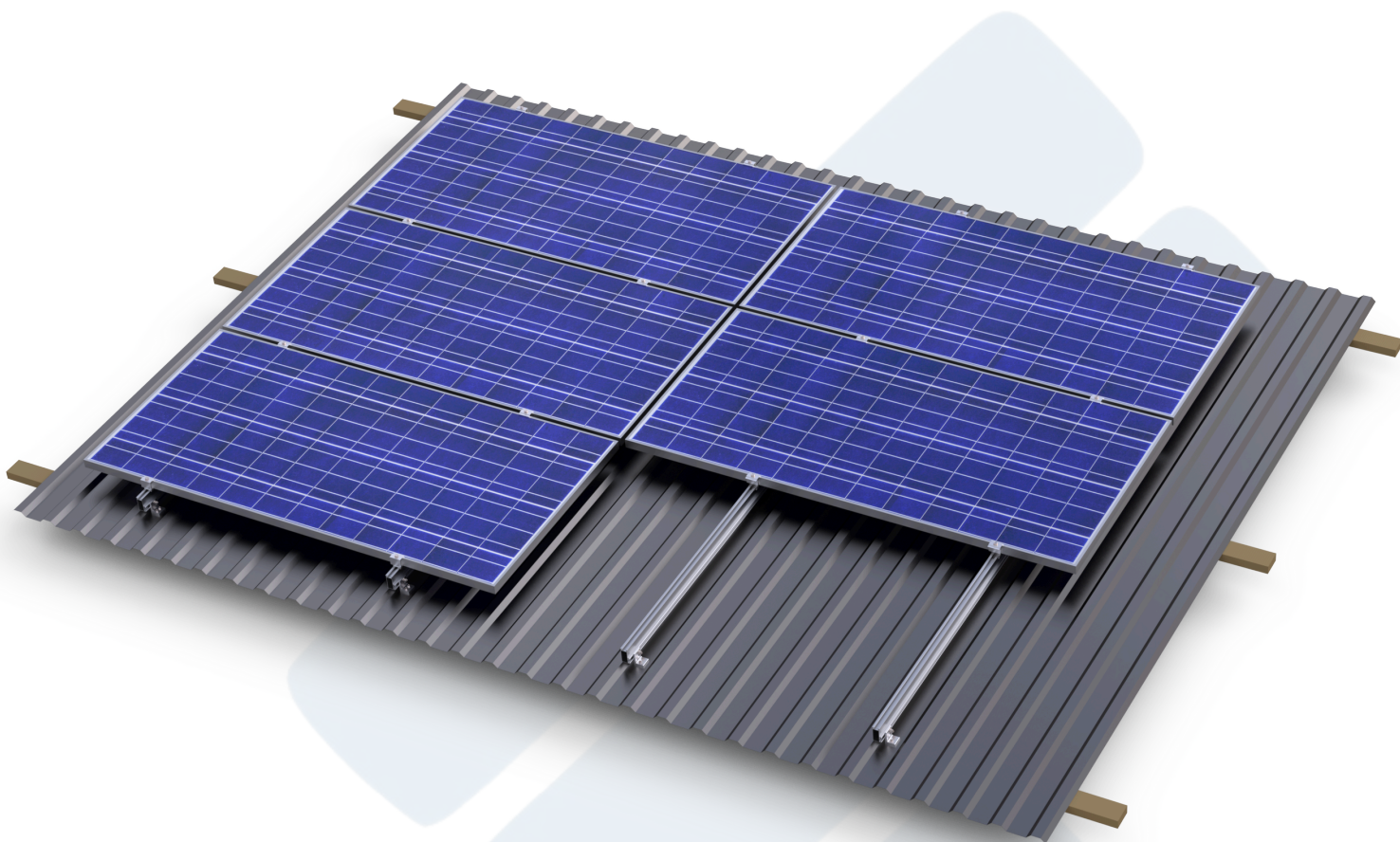
Top rail



Angle bracket



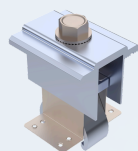
Connection rail



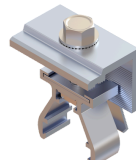
Features & Benefits:

- Single layer of rails attaching directly to the purlins
- High rigidity of rails for larger loads
- Reduce attachment points by fastening to the purlins
- Easy wire management
- Clamp modules in approved zones
- Universal click-on components

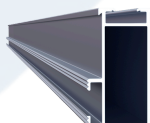
Components:



Mid clamp



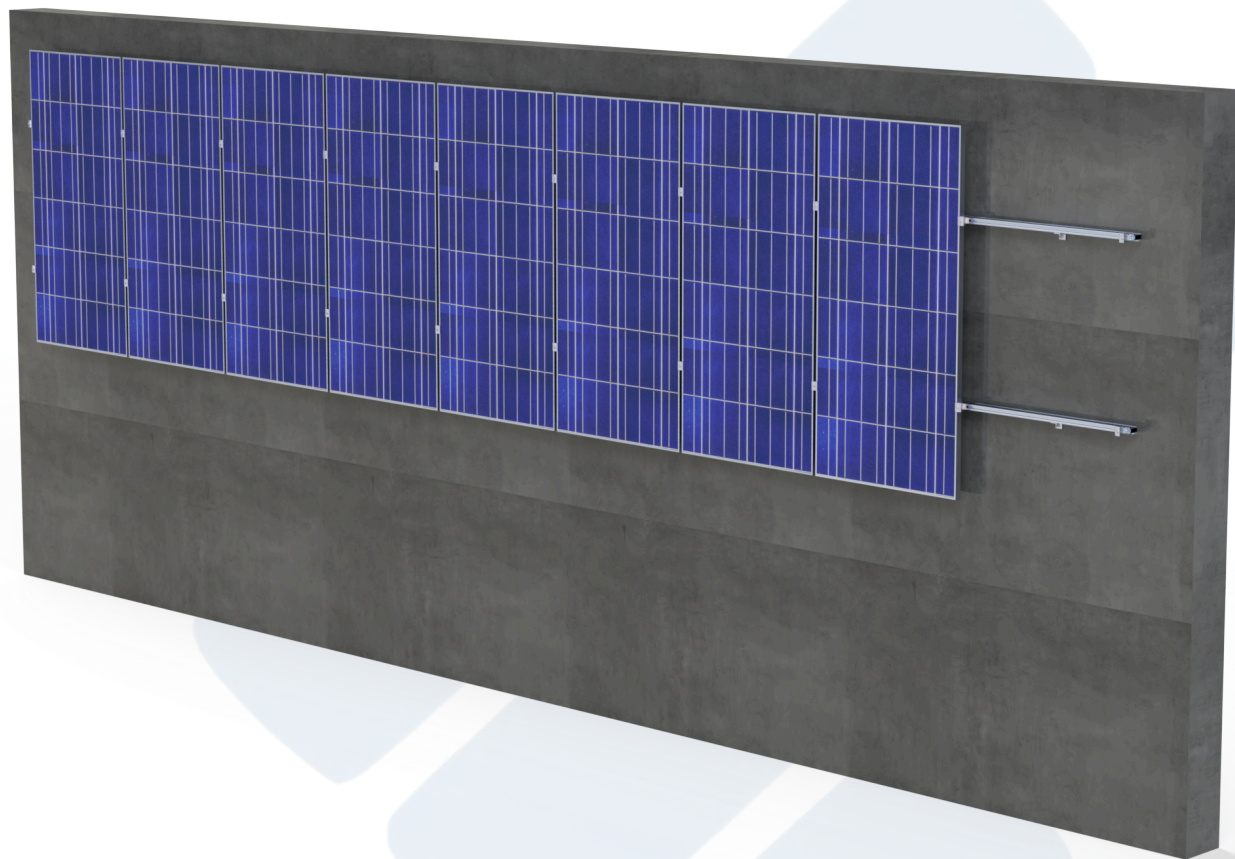
End clamp



Top rail



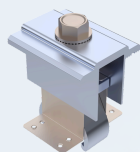
Angle bracket



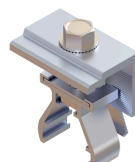
Features & Benefits:

- Increase system size by optimizing available space
- Modern aesthetic look
- Compatible with concrete anchors or other unique wall mount attachments
- Easy wire management
- Clamp modules in approved zones
- Universal click-on components
- High rigidity of rails for larger loads

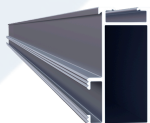
Components:



Mid clamp



End clamp



Top rail



Angle bracket