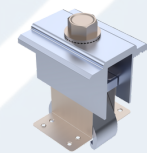


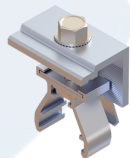
Features & Benefits:

- Compatible with any metal roof attachment
- High rigidity of rails for larger loads
- Universal click-on components
- Reduce attachment points by fastening to the purlins
- Easy wire management
- Clamp modules in approved zones
- Fasten through the high ridge eliminating leak concerns

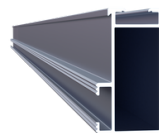
Components:



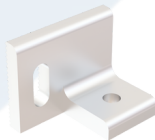
Mid clamp



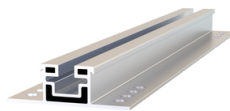
End clamp



Top rail



COR bracket



COR rail