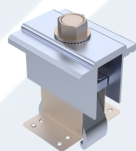


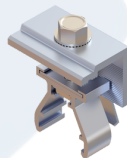
Features & Benefits:

- Compatible with any metal roof attachment
- High rigidity of rails for larger loads
- Fasten through the high ridge eliminating leak concerns
- Easy wire management
- Clamp modules in approved zones
- Universal click-on components
- Reduce attachment points by fastening to the purlins

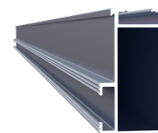
Components:



Mid clamp



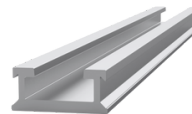
End clamp



Top rail



Angle bracket



Connection rail