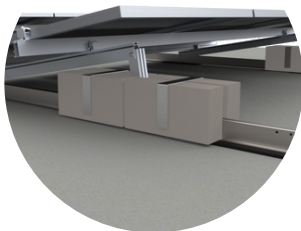




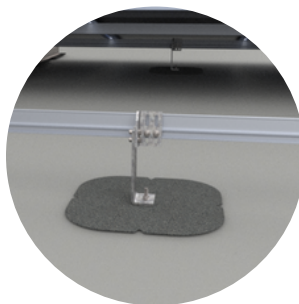
TGR Flat Roof Mounting Solution

Whether you are ballasting the system or mechanically fastening it to the roof, TGR is the best solution for you. Safe, economic, lightweight, flexible, and easy to install are just a few of the benefits.

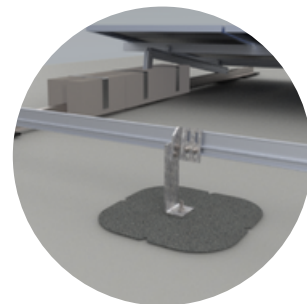
Uplift Resistance Options



Ballast



Mechanical
Attachment

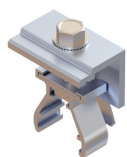


Hybrid

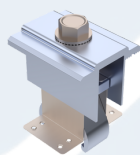
Features and Benefits

- **Rail Based**
 - Structural rigidity and low ballast requirements
 - Clean and accessible wire management
 - Doesn't rely on the module for load sharing increasing microcracks
- **Clamp in Module Green Zones**
 - Maintain module warranty
 - Allows for highest load rating for snow load or high wind regions
- **Flexible Design**
 - Any tilt angle or row spacing to the customer's specifications to maximize power generation
 - Higher tilt options unique to the market
 - Any row spacing to maximize panel density
- **No Wind Screen Required**
 - Installation efficiencies
 - Cooling effects on modules lead to increased performance
 - Reduce snow build up on following module
- **Service From Start to Finish**
 - Project management and support
 - Project specific engineering packages
 - Construction package walkthroughs
 - Experienced and knowledgeable support team

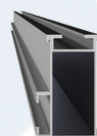
Components



End Clamp



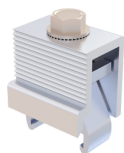
Mid Clamp



Top Rail



Top Rail Splice with Integrated Bonding



Cross Adapter



Tilt Assembly



Base Rail



Rubber Pad

Technical Specs

Tilt Angle:	0° - 35° (Site dependent)	Building Height:	Any
Panel Orientation:	Portrait optimized & Landscape option is available	Wind Speed:	Any
Row Spacing:	Customizable	Wind Tunnel Testing:	RWDI
Roof Type:	All roof types	Certifications:	UL 2703, UL 3741
Roof Attachment:	Ballast, Anchor or Hybrid	Warranty:	Standard 10 with 15-20 available upon request
Material:	Aluminum, stainless steel & galvanized steel		