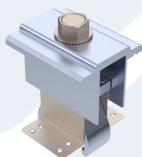


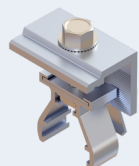
Features & Benefits:

- Compatible with any metal roof attachment
- High rigidity of rails for larger loads
- Fasten through the high ridge eliminating leak concerns
- Reduce attachment points by fastening to the purlins
- Easy wire management
- Clamp modules in approved zones
- Universal click-on components

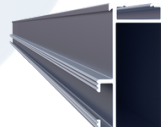
Components:



Mid clamp



End clamp



Top rail



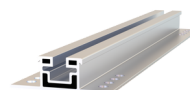
Cross adapter



Tilt assembly



COR bracket



COR rail