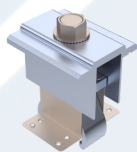


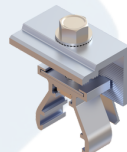
Features & Benefits:

- Increase system size by optimizing available space
- Modern aesthetic look
- Compatible with concrete anchors or other unique wall mount attachments
- High rigidity of rails for larger loads
- Easy wire management
- Clamp modules in approved zones
- Universal click-on components

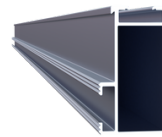
Components:



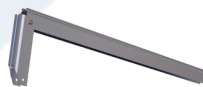
Mid clamp



End clamp



Top rail



Tilt assembly



U Bracket